

T4S/CATENA

for ALTO MODULAR INVERTER

Description

- System monitoring solution for Agil systems
- Monitoring data from system level to module level
- Rear ethernet connection for LAN connectivity
- Front ethernet connection for maintenance and service
- Highly configurable alarms, digital inputs and relays mapping
- Support multiple protocols like Modbus and SNMP to be integrated in BMS.
- Extended memory for log file and data logging related to battery
- Easy to update from remote location (user interface) or locally (USB)
- File download/upload from USB stick front face
- Web based user interface accessible locally through 7" touchscreen or remotely from web browser.
- Basic and Expert user level access



Features

Supported Protocols

- Modbus on RS485 (read only)
- SNMP v1, v2c and v3 based on RFC1628 MIB

Logs

- FIFO event log up to 1000 events

Environmental

- Temperature :
 - Ambient : -20°C to 40°C
 - Storage : -40°C to 70°C
- Humidity : 95% non condensing

System features

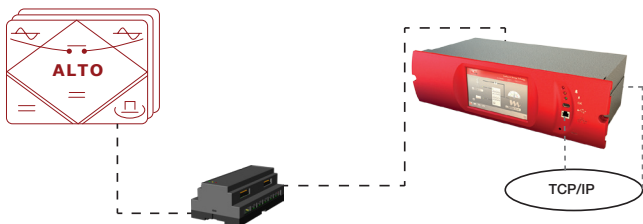
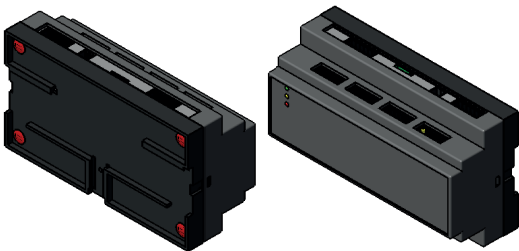
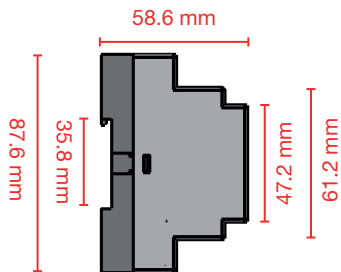
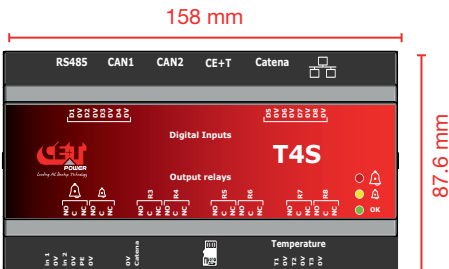
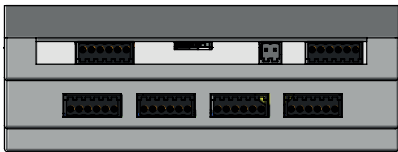
T4S

- 8 output relays (Major, Minor, 6 user programmable)
- 8 digital inputs
- ETH connection
- 3 status LED (Major, Minor, OK)
- CET Module bus
- Din Rail Mounting
- Redundant 12V power supply

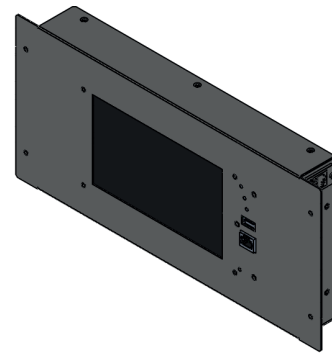
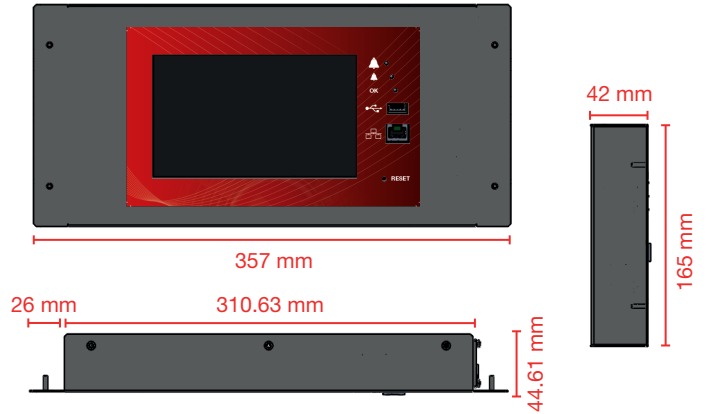
Catena

- 7" LCD capacitive touchscreen
- 3 status LED (Major, Minor, OK)
- 1x front USB
- 1x front Ethernet + 1x rear Ethernet (not coupled)
- Rack or panel mounting
- Redundant 12V power supply

T4S monitoring unit
(0.408 kg)



Panel mounted CATENA display
(1.62 kg)



Rack mounted CATENA display
(2.845 kg)

